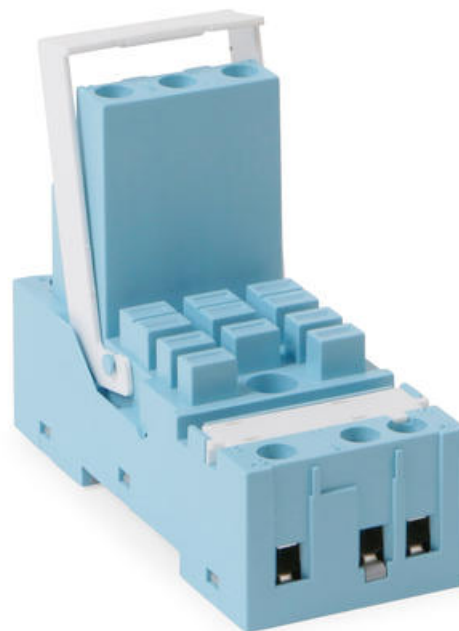


## SOCKETS FOR C5 INDUSTRIAL RELAYS

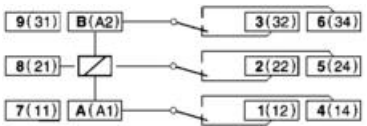
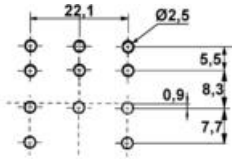
3-pole

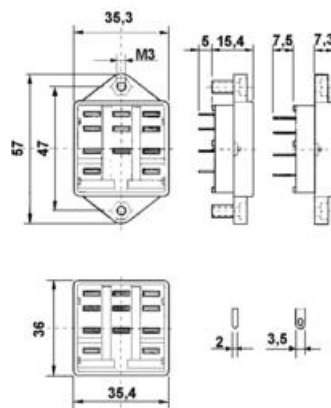
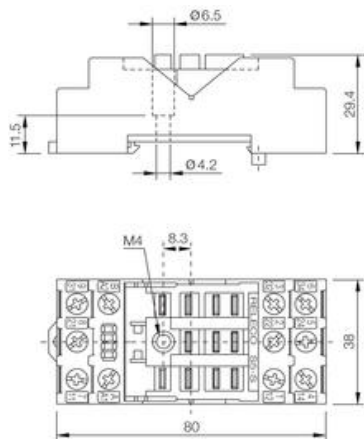
S5M  
SOCKET 11 PIN DIN RAIL FOR C5

- Both DIN and EN connection numbering
- Semi-protected
- Integrated retaining bow
- Logic connection



### PRODUCT DESCRIPTION

Article	S5S	S5L, S5P, S5PO
Fits relay	C5	C5
Description	Screw socket. Rail or screw mount. Logic connection	S5L: Solder socket with attachment lug S5P: Circuit board socket S5PO: Circuit board socket with attachment lug.
Connection		
Nominal load	16 A/400 V	16 A/400 V
Isolation conn./conn.	2500 V	2500 V
Isolation conn./rail	2500 V	-
Screw socket, conn.	M3, Pozzi	-
Torque, conn.	1.2 Nm	-
Single conductor	4 mm <sup>2</sup> or 2x2.25 mm <sup>2</sup>	-
Multi-conductor cable	22-14 AWG	-
Material	Cicloy	Cicloy
Weight	65 g	57 g
Temperature range	-20 °C to +60 °C	-20 °C to +60 °C
Approval	See separate approval list.	



## PART NUMBERS

Order number	Description
S5S	Screw socket (level) with retaining bow for C5 relays
S5L	Solder socket for C5 relays
S5P	Circuit board socket for C5 relays
S5PO	Circuit board socket with attachment lug for C5 relays
S3C	Retaining bow in metal for C2/C3/C4 relays
S4R	Rear bracket for mounting on DIN rail or screw attachment to
S5R	Flat bracket for screw attachment to C4/C5 relays
S44	Semi-protection for rear bracket S4R for C4/C5 relays
SONP	Black blind test button for C3/C4/C5 relays
SOOP	Orange non-locking test button for C3/C4/C5 relays

## SPECIFICATIONS

Switching Capability Voltage	400 V
Breaking Capacity Current	16 A
Isolation conn./conn.	4000 V
Isolation connection/rail	4000 V
Material	Lexan
Torque Connection	1 Nm
Screw size	M3.5, Pozi

Cross section stranded	1,5-6 mm <sup>2</sup>
Temperature range from	-40 °C
Temperature range bearing, from	-40 °C
Temperature range bearing, to	80 °C
Temperature range to	60 °C
Weight	92 g

